



# West Burlington City Newsletter



## JOIN US IN DOWNTOWN WEST BURLINGTON FOR THE ANNUAL 4TH OF JULY CELEBRATION!!!

### SCHEDULE OF EVENTS



7 a.m. - 10 a.m.	Fire Department <b>PANCAKE BREAKFAST</b>
10:30 a.m.	4th of July All Denomination <b>PRAYER &amp; PRAISE SERVICE</b>
11 - ?	Children's <b>GAMES</b> ( <i>Free</i> Petting Zoo, Train Rides, Inflatable Games and more!!)
7 a.m. - ?	<b>CRAFT SHOW</b>
11 a.m. - 4 p.m.	<b>BINGO</b> (City Hall Basement—Handicapped Accessible)
11 a.m. - 4 p.m.	<b>CLASSIC CARS, TRUCKS, RACE CARS &amp; MOTORCYCLE DISPLAY</b>
4 p.m.	<b>PARADE</b> (Huston Street)
5:30 p.m.	Family Biking <b>SCAVENGER HUNT</b> (Keep your bike handy for this event. The Scavenger Hunt takes you on a tour around town in search of clues. Meet at the F&M Bank drive-in parking lot to participate.)
10:01 p.m.	<b>FIREWORKS</b> —Downtown West Burlington



### **\*\*Performing on the Miller Lite Outdoor Stage\*\***

GREAT FOOD AND DRINK  
WILL BE AVAILABLE  
ALL DAY!!

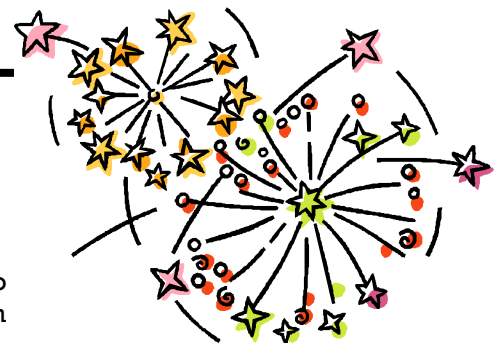
11 a.m.	<b>Westside Mongrels</b> (Local Jazz Group)
12 - 2 p.m.	<b>Youth Talent Show</b> (Register at City Hall. This event is sponsored by Fun City)
2 p.m. - 4 p.m.	<b>R.C. Karaoke Contest</b> (Sponsored by Renteria's Dairy Treat)
5 p.m. - 7 p.m.	<b>Scott Ivy and the DeJaynes Brothers</b> (Acoustic Rock)
7 p.m. - 10 p.m.	<b>David Kroll &amp; Heartland</b> (Country Music)



## 4th of July Raffle

**Don't forget to buy your Raffle Ticket!!**

Drawing will take place on the 4th of July. You do not have to be present to win, but you won't want to miss it. Tickets are available at West Burlington City Hall and proceeds are used to pay for the fireworks display.



## 2006 WATER QUALITY REPORT FOR WEST BURLINGTON MUNICIPAL WATER SUPPLY

This report contains important information regarding the water quality in our water system. The source of our water is groundwater and surface water. Our groundwater is drawn from the Pleistocene aquifer(s). Our surface water is drawn from Mississippi River. Our water quality testing shows the following results:

CONTAMINANT	MCLG	MCL	DETECTED LEVEL	DATE SAMPLED	RANGE OF DETECTION	VIOLATION	SOURCE
Turbidity (NTU)	N/A	TT	.06	N/A	0.01 – 0.06	None	Soil runoff
Fluoride (ppm)	4	4	0.95 (1)	N/A	0.48 – 1.25	None	Water additive which promotes strong teeth; Erosion of natural deposits; Discharge from fertilizer and aluminum factories
Nitrite [as N] (ppm)	10	10	3.2	N/A	1.0 – 3.2	None	Runoff from fertilizer use; Leaching from septic tanks, sewage; Erosion of natural deposits
Chlorine (ppm)	MRDLG =4.0	MRDL=4.0	2.08 (1)	N/A	1.51 – 2.52	None	Water additive used to control microbes
Sodium (ppm)	N/A	N/A	16.8	6/12/06	N/A	None	Erosion of natural deposits; Added to water during treatment process
Barium (ppm)	2	2	0.25	6/16/05	N/A	None	Discharge of drilling wastes; Discharge from metal refineries; Erosion of natural deposits
Atrazine (ppb)	3	3	0.16	7/27/06	N/A	None	Runoff from herbicide used on row crops
Toluene (ppm)	1	1	0.001	8/30/06	0.0005 – 0.001	None	Discharge from petroleum factories
Total Organic Carbon (TOC) (ppm)	N/A	TT	2.04 (1)	N/A	2.07 – 2.79	None	Naturally present in the environment
TTHM (ppb) (Total Trihalomethanes]	N/A	80	112 (1)	N/A	38 – 200	Yes	By-products of drinking water disinfection
Haloacetic Acids (HAA5) (ppb)	N/A	60	24 (1)	N/A	18 – 32	None	By-products of drinking water disinfection
Copper (ppm)	1.3	AL=1.3	0.05	9/30/04	N/A	None	Corrosion of household plumbing systems; Erosion of natural deposits
Lead (ppb)	0	AL=15	1	9/30/04	0 – 2	None	Corrosion of household plumbing systems; erosion of natural deposits

Note: Contaminants with dates indicate results from the most recent testing done in accordance with regulations.

(1) Running Annual Average

### DEFINITIONS

- Maximum Contaminant Level (MCL) – The highest level of a contaminant that is allowed in drinking water. MCLs are set as close to the MCLGs as feasible using the best available treatment technology.
- Maximum Contaminant Level Goal (MCLG) -- The level of a contaminant in drinking water below which there is no known or expected risk to health. MCLGs allow for a margin of safety.

*Definitions Continued from previous page*

- ppb -- parts per billion.
- ppm -- parts per million.
- N/A – Not applicable
- NTU – Nephelometric Turbidity Units
- Treatment Technique (TT) – A required process intended to reduce the level of a contaminant in drinking water.
- Action Level (AL) – The concentration of a contaminant which, if exceeded, triggers treatment or other requirements which a water system must follow.
- Maximum Residual Disinfectant Level Goal (MRDLG) - The level of a drinking water disinfectant below which there is no known or expected risk to health. MRDLGs do not reflect the benefits of the use of disinfectants to control microbial Maximum Residual Disinfectant Level (MRDL) - The highest level of a disinfectant allowed in drinking water. There is convincing evidence that addition of a disinfectant is necessary for control of microbial contaminants.

### **GENERAL INFORMATION**

Drinking water, including bottled water, may reasonably be expected to contain at least small amounts of some contaminants. The presence of contaminants does not necessarily indicate that water posed a health risk. More information about contaminants or potential health effects can be obtained by calling the Environmental Protection Agency's Safe Drinking Water Hotline (800-426-4791).

Some people may be more vulnerable to contaminants in drinking water than the general population. Immuno-compromised persons such as persons with cancer undergoing chemotherapy, persons who have undergone organ transplants, people with HIV/AIDS or other immune system disorders, some elderly, and infants can be particularly at risk from infections. These people should seek advice about drinking water from their health care providers. EPA/CDC guidelines on appropriate means to lessen the risk of infection by *Cryptosporidium* and other microbial contaminants are available from the Safe Drinking Water Hotline (800-426-4791).

### **CONTAMINANT VIOLATIONS**

TTHMs [Total Trihalomethanes]. Some people who drink water containing trihalomethanes in excess of the MCL over many years may experience problems with their liver, kidneys, or central nervous systems, and may have an increased risk of getting cancer. At the end of 2005 Burlington Municipal Water Works began using Chloramines to disinfect the drinking water. We are pleased to report that test results since that time have show that our TTHM's have been in compliance from that point on. We are required to report this violation until our running annual average is below the MCL of 80 ppb.

### **SOURCE WATER ASSESSMENT INFORMATION**

The West Burlington Municipal Water Supply obtains its water from Burlington Municipal Waterworks. There are two (2) sources of water that the Burlington Municipal Waterworks uses to supply the needs of our customers. Approximately eighty percent (80%) comes from the Mississippi River. The remaining 20% comes from three (3) wells in the Pleistocene aquifer. The Pleistocene aquifer was determined to be highly susceptible to contamination because the characteristics of the aquifer and overlying materials allow contaminants to move through the aquifer fairly quickly. The wells will be most susceptible to activities such as dry cleaners, gas stations, industrial sites, and municipal wastewater dischargers. A detailed evaluation of your source water was completed by the IDNR, and is available from Alan Borden, Burlington Municipal Waterworks at 319-754-6501.

### **OTHER INFORMATION**

West Burlington Municipal Water Supply currently has six employees that are licensed water treatment operators by the State of Iowa. Our water utility is making every effort to protect the water system from potential security threats. You, as customers, can also help. If you see any suspicious activity near the water tower, treatment plant, wells or fire hydrants, please contact West Burlington City Hall at 319-752-5451 or the local police/sheriff department. We appreciate your assistance in protecting the water system.

### **CONTACT INFORMATION**



For questions regarding this information, please contact City Administrator Dan Gifford at 319-752-5451 between 8:00 a.m. and 5:00 p.m. Monday through Friday. Decisions regarding the water system are made at the West Burlington City Council meetings held on the first and third Wednesdays of each month at 6:00 p.m. and are open to the public.

Este informe contiene informacion muy importante sobre su agua bebar. Traduzcalo o hable conalguien que lo entienda bien.



## Tall Grass & Junk Become Nuisance Issues

This time of year the City starts to receive complaints of tall grass and weeds. City Council recently passed a new Ordinance regulating how tall grass & weed nuisances are handled. The City Code requires property owners or tenants to maintain grass, weeds and brush on their property. Grass in all areas of town should not exceed a height of six (6) inches. Any undeveloped property must be maintained within 100 feet of any adjoining street, alley or developed property. The building inspector makes routine inspections throughout town looking for nuisances. Take a look around your property to make sure you aren't in violation. In addition to grass & weed violations the following is a list of items that **can not** be stored outside and would be considered a violation of City Code:

- Old scrap copper, brass, lead, iron, steel or metal
  - Old or discarded rope, rags, batteries, paper trash, rubbish, debris, waste or used lumber (*Neatly* stacked firewood on a side yard or rear yard is not considered junk.)
  - Dismantled vehicles, machinery and appliances or parts of these items
  - Discarded glass, tin ware, plastic or household goods or hardware.
  - Inoperable vehicle or vehicles that has become the habitat for rats, mice, snakes, vermin or insects
  - Vehicles that in any way constitutes a threat to the public health and safety. Defects may include any vehicle with a broken or cracked windshield, window, headlight, taillight, broken glass, broken or loose part including fender door, bumper, hood, radio aerial or tail pipe.
- 

Current West Burlington Resident  
West Burlington, IA 52655

PRESORT STD  
U.S. POSTAGE  
PAID  
WEST BURLINGTON, IA  
PERMIT NO. 14

City of West Burlington  
City Hall  
122 Broadway  
West Burlington, IA 52655